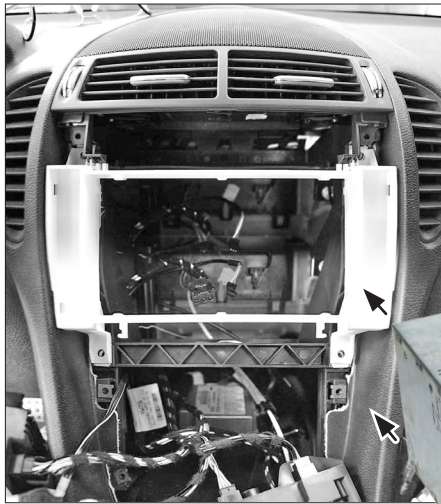
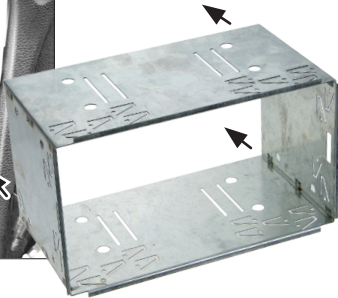


Installation Manual Double DIN Kit 381190-24 / 391190-24



7. Place the mounting frame at the dashboard. Fix it with the original screws.

Place the metal frame into the mounting frame.



(sample photo)

8. Connect all required circuit points to the Pioneer head unit and push it into the metal frame until it snaps in.

Place the facia plate

Reinstall everything in reverse order to finish installation.

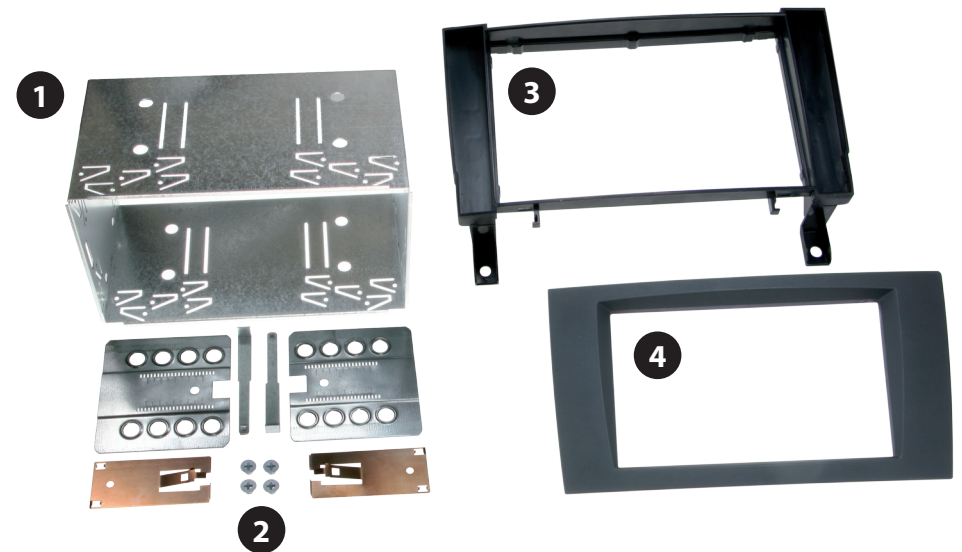


Installation Manual Double DIN Kit

Standard: 381190-24
Rubber-Touch: 391190-24

• Mercedes SLK-Class (R171) 2005 →

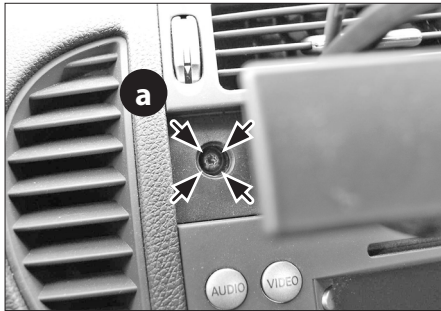
Compatible with double DIN devices



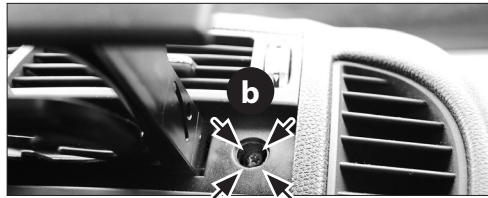
Double DIN Set contents

- (1) Metal Frame
- (2) Installation Kit
- (3) Mounting frame
- (4) Facia Plate

Installation Manual Double DIN Kit 381190-24 / 391190-24



1. Open the cup holder above the OEM head unit. Remove screws (a) and (b). *(The screws are covered with rubber caps)*

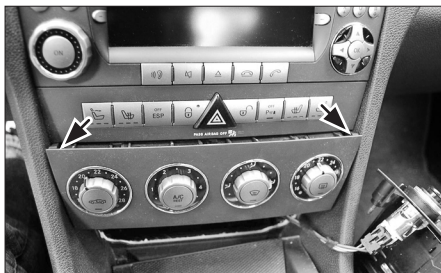


2. Remove the cup holder unit.

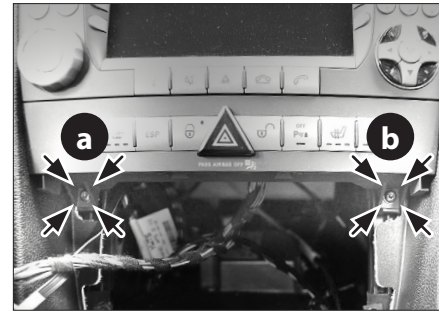


3. Open the ash tray
Remove screw (a) on the left.
Remove the cover surrounding the cigarette lighter.
Remove screw (b) on the right.

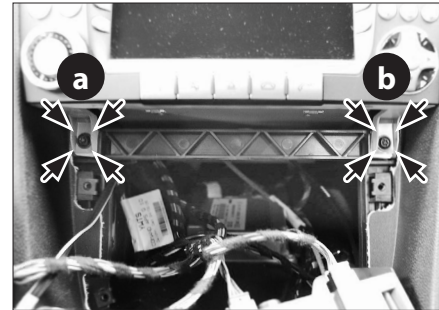
Remove the complete ash tray unit.



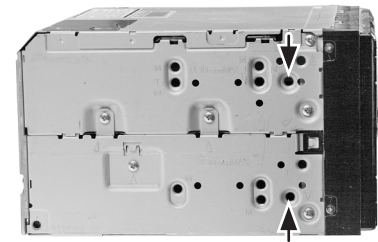
4. Remove climate control unit



5. Remove screws (a) and (b), then take out switch panel.

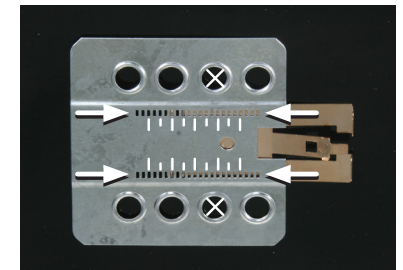


6. Remove screws (a) and (b)
Remove OEM head unit.



(sample photo)

Mount the metal brackets to the double DIN head unit.



(sample photo)

The position of the copper coloured holder can be adjusted to your needs for perfect fit. (see sample)

*All installation work must be performed by a qualified professional installer only.
The manufacturer / dealer is not liable for any kind of incidental or indirect damages.*