

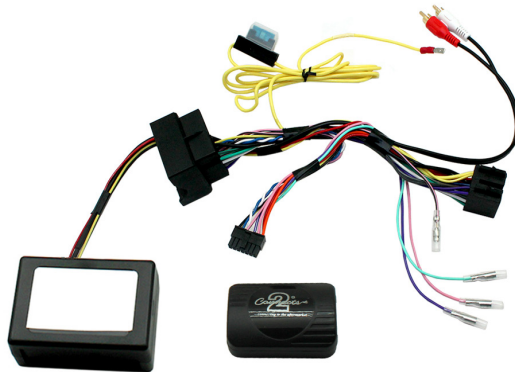


*...connecting to the aftermarket*

## CTSBM012.2

### BMW Steering Wheel Control Interface

With MOST Amplifier Retention



Plug and Play



OEM Amplifier Retention



USB Updateable



Works with CAN-Bus



Park Brake



Reverse Gear



Phone Button Support



Speed Pulse

### Application:

5-Series 2004 - 2010

1-Series 2004 - 2013

3-Series 2005 - 2012

*[www.connects2.com](http://www.connects2.com)*

Designed and  
Engineered  
in the UK. 

## ABOUT THIS PRODUCT...

---

### CTSBM012.2

Can-Bus BMW Steering Wheel Control Interface for BMW Vehicles with OEM MOST Amplifier. NB. Yellow Permanent 12V Wire Must Be Connected Directly to Battery

### Product Contents

1. Interface
2. Harness
3. Instruction

### Prior to installation

Read the manual prior to installation. Technical knowledge is necessary for installation. The place of installation must be free of moisture and away from heat sources. Please ensure you use the correct tools to avoid damage to the vehicle or product.

**Connects2 can not be held responsible for the installation of this product.**

### Wiring Colour Codes

| Wire Colour  | Function       |
|--------------|----------------|
| Yellow       | Permanent 12V  |
| Black        | Ground         |
| Red          | 12V Ignition   |
| Orange       | Illumination   |
| Pink         | Speed Pulse    |
| Green        | Park Brake     |
| Purple/White | Reverse        |
| Pink/Purple  | Telephone Mute |

| Wire Colour  | Function              |
|--------------|-----------------------|
| Purple       | Right Rear Speaker +  |
| Purple/Black | Right Rear Speaker -  |
| Green        | Left Rear Speaker +   |
| Green/Black  | Left Rear Speaker -   |
| Grey         | Right Front Speaker + |
| Grey/Black   | Right Front Speaker - |
| White        | Left Front Speaker +  |
| White/Black  | Left Front Speaker -  |

### Technical Support

Connects2 want to provide a fast and suitable resolution should you encounter any technical issues. With this in mind, when contacting Connects2, try to provide as much information as possible. This will speed up the process and help us to help you.

**Please use our dedicated online technical support centre: [support.connects2.com](http://support.connects2.com)**

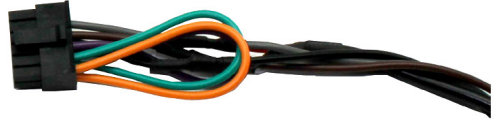


Subscribe to our YouTube Channel for installation guides and tips... [www.youtube.com/connects2](http://www.youtube.com/connects2)

## FITTING GUIDE

---

1. Remove and disconnect the original head unit.
2. Connect the 12 way molex connector of the head unit patch lead (supplied separately) to the interface.



3. Connect the opposite end of head unit patch lead to the head unit steering wheel control input on the back of the aftermarket head unit. This may be a 3.5mm jack plug or a wire input depending upon the head unit brand being fitted.

Please see the head unit installation manual for further information on where to connect.

**Important Note: This step must be completed before connecting power to the interface. Failure to so do may result in no steering wheel control function.**

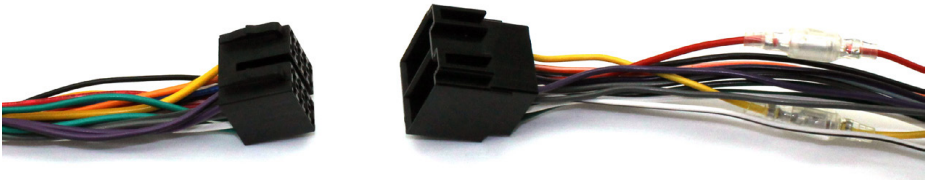


4. Connect the 14 way molex connector to the interface



## FITTING GUIDE

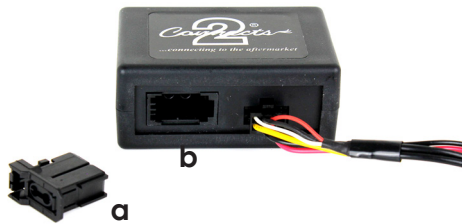
5. Connect the male power/speaker ISO harness to the female power/speaker ISO harness from the aftermarket head unit. For aftermarket head units without an ISO connector, please refer to the wiring colours on Pg. 2.



6. Connect the female vehicle specific connector to the male vehicle connector.

7. Connect the RCA connectors to the ports on the back of the aftermarket head unit

8. Remove the dust cover (a) from the port on the amp retention interface (b)



9. Remove the fibre amplifier connection from the OEM stereo and plug it into the amp retention interface (b)

10. Connect the yellow permanent 12V wire directly to the battery

11. Test head unit for correct operation and reassemble the dashboard

## STEERING WHEEL CONTROL FUNCTIONS

