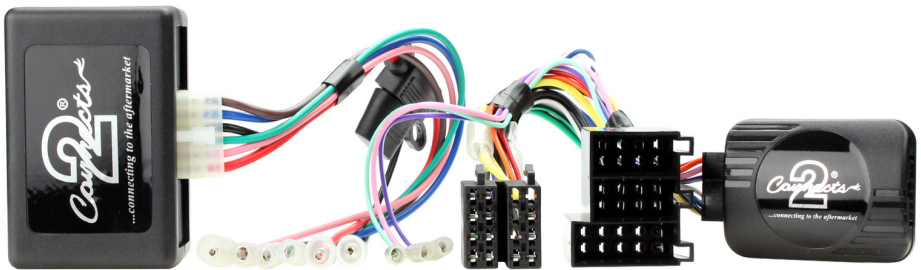




CTSMC014.2

Mercedes Benz Steering Wheel Control Interface



Vehicle Application

Mercedes Benz Actros 2007 - 2012

Key Features

- Retains Steering Wheel Controls (if equipped)
 - Retains OEM Phone Buttons (if equipped)
- Provides Speed Pulse, Park Brake & Reverse Gear Feeds
 - Includes 24V-12V Voltage Dropper

www.connects2.com

Designed and
Engineered
in the UK. 

CTSMC014.2

CAN-Bus Steering Wheel Control Interface for Mercedes Benz Actros Trucks.
Includes 24V-12V Voltage Dropper.

Product Contents

1. Interface
2. Harness
3. Instruction

Prior to installation

Read the manual prior to installation. Technical knowledge is necessary for installation. The place of installation must be free of moisture and away from heat sources. Please ensure you use the correct tools to avoid damage to the vehicle or product.

Connects2 can not be held responsible for the installation of this product.

This product requires the use of a voltage dropper (included) in order to convert the voltage to 12V. Ensure that the voltage dropper is connected to the interface before connecting power (See Step 5).

Wiring Colour Codes

Purple	Right Rear Speaker +	Yellow	Permanent 12V
Purple/Black	Right Rear Speaker -	Black	Ground
Green	Left Rear Speaker +	Red	Ignition 12V
Green/Black	Left Rear Speaker -	Pink	Speed Pulse
Grey	Right Front Speaker +	Green	Park Brake
Grey/Black	Right Front Speaker -	Purple/White	Reverse Gear
White	Left Front Speaker +		
White/Black	Left Front Speaker -		

Technical Support

Connects2 want to provide a fast and suitable resolution should you encounter any technical issues. With this in mind, when contacting Connects2, try to provide as much Information as possible. This will speed up the process and help us to help you.

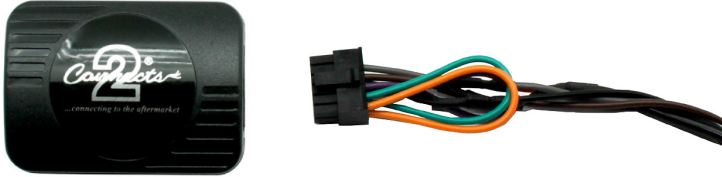
Please use our dedicated online technical support centre: support.connects2.com



Subscribe to our YouTube Channel for installation guides and tips... www.youtube.com/connects2

FITTING GUIDE

1. Remove and disconnect the original head unit.
2. Connect the 12 way molex connector of the head unit patch lead (supplied separately) to the interface.



3. Connect the opposite end of head unit patch lead to the head unit steering wheel control input on the back of the aftermarket head unit.

NB: This may be a 3.5mm jack plug or a wire input depending upon the head unit brand being fitted. Please see the head unit installation manual for further information on where to connect.

Important: This step must be completed before connecting power to the interface. Failure to so do may result in no steering wheel control function.



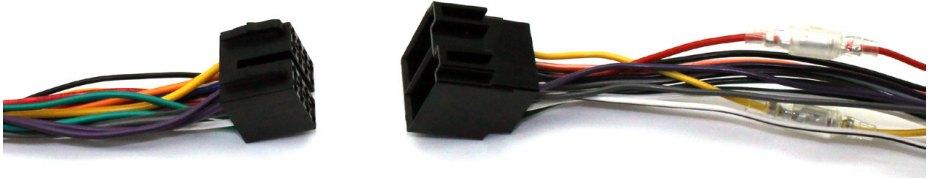
4. Connect the 14 way molex connector to the interface



FITTING GUIDE

5. Connect the voltage dropper (included) between the two spare pairs of bullets (yellow/black wires) to convert the voltage from 24V to 12V.

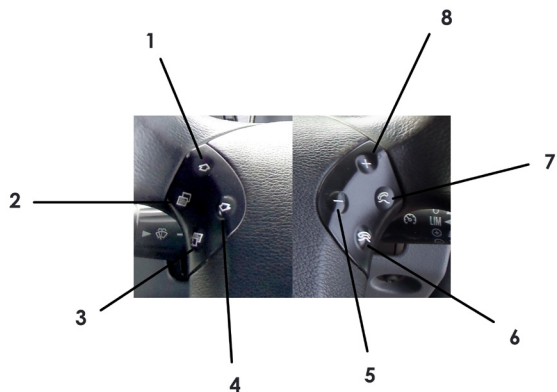
6. Connect the male power/speaker ISO harness to the female power/speaker ISO harness from the aftermarket head unit. For aftermarket head units without an ISO connector, please refer to the wiring colours on Pg. 2.



7. Connect the female vehicle specific connector to the male vehicle connector. Test head unit for correct operation.

STEERING WHEEL CONTROL FUNCTIONS

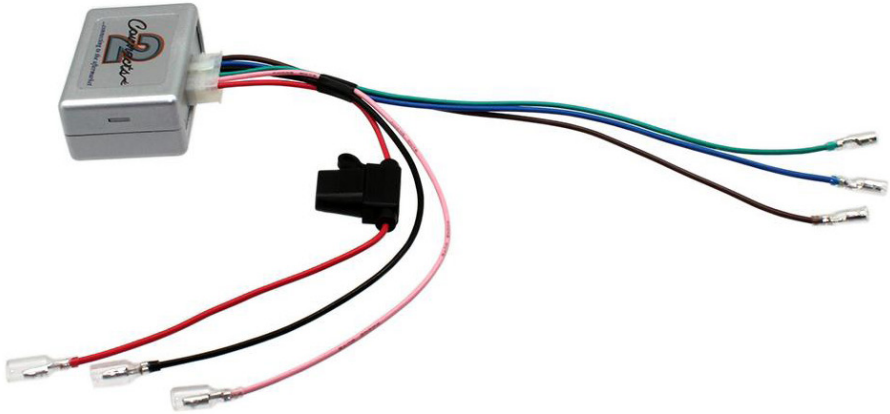
1. Track +
2. Page +
3. Page -
4. Track -
5. Volume -
6. Hang Up
7. Pick Up
8. Volume +





CT54-04

Universal 24V-12V Voltage Dropper



PRODUCT FEATURES

The CT54-04 is a plug and play voltage dropper that is a perfect for those looking to install any aftermarket stereo/accessories into a vehicle where the voltage output is higher than standard. The CT54-04 regulates a constant feed of 10A and can withstand high inputs of voltage commonly used within the commercial industry.

PRIOR TO INSTALLATION

Read the manual prior to installation. Technical knowledge is necessary for installation. Please ensure you use the correct tools to avoid damage to the vehicle or product.

Connects2 can not be held responsible for the installation of this product.

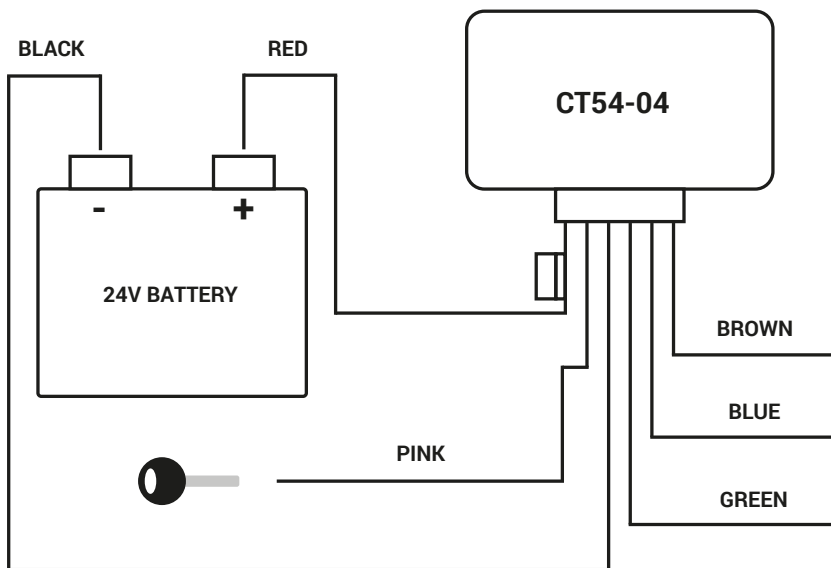
DISCLAIMER

The information provided in this document is subject to change without notice due to manufacturer changes and/or improvements to the product/s. This instruction manual is based on documented data and research. The manufacturer of this product cannot be held responsible for any changes made to the vehicle by the manufacturer or damages that may occur through the installation of this product in accordance with the steps outlined herein.

PRODUCT SPECIFICATIONS

	Min	Max
Power Input Voltage	18V	30V
Output Voltage	13V (+/- 0.1V)	
Remote Input on Voltage	18V	30V
Remote Output on Voltage	13V (+/- 0.1V)	
Output Current - Continuous	10A	
Output Current - Maximum	12A	
Standby Current	<17mA	
Efficiency	90%	95%
Operating Temperature	-40°C ~ +85°C	

The CT54-04 also features protection against input polarity inversion, under/over voltage and overloading/heating.



Wiring on CT54-04 harness:

- BLACK - Connect to source of input Ground (24V)
- RED - Connect to source of input Battery Live (24V)
- PINK - Connect to source of input Ignition (24V)
- BROWN - Connect to source of output Permanent (12V)
- BLUE - Connect to source of output Ground (12V)
- GREEN - Connect to source of output ACC (12V)

Need help? Visit support.connects2.com/tickets/technical

CT54-04_IG_v1