

APPLICATIONS
Toyota Corolla
2009

CT23TY09

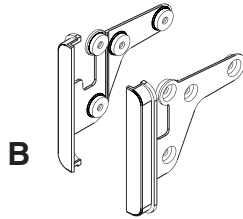
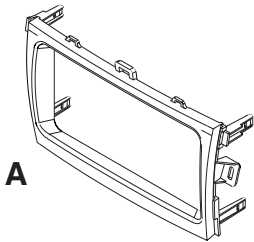
KIT FEATURES

- Double DIN Radio Provision
- Stacked ISO Mount Units Provision
- Painted To Match Factory Dash



KIT COMPONENTS

- A) Radio Housing Trim Plate
- B) Double Din Trim Plate



TOOLS REQUIRED:

- Small Flat Blade Screwdriver/ Panel Removal Tool
- Phillips Screwdriver



TABLE OF CONTENTS

Dash Disassembly

- Toyota Corolla 2009 1

Kit Assembly

- Double DIN/Stacked ISO Mount Units Provision 2

Final Assembly 3

***Note:**

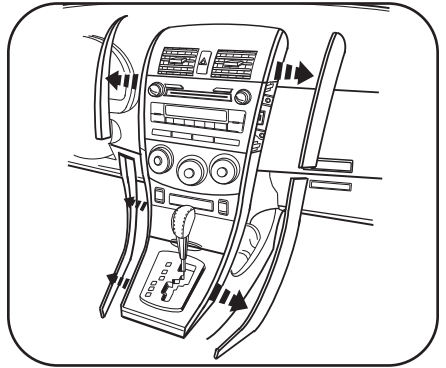
Refer also to the instructions included with the aftermarket radio.

Toyota Corolla 2009

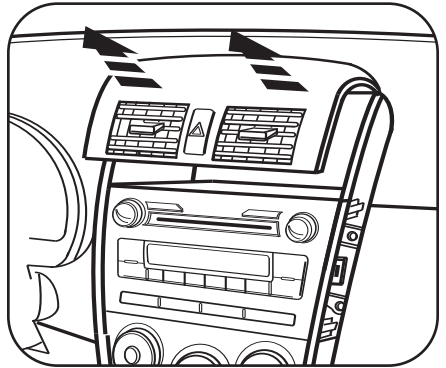
- 1 Disconnect the negative battery terminal to prevent an accidental short circuit.
- 2 Unclip and remove the (4) side trim panels from the right and left side of the radio and a/c controls. (Figure A)
- 3 Unclip and remove the a/c vent panel above the factory radio.(Figure B)
- 4 Remove (4) 10 MM bolts securing the radio. (Figure C)
- 5 Remove (8) screws securing the brackets to the factory radio and remove the brackets. (Retain the brackets for re-use during kit assembly.) (Figure D)
- 6 Remove (4) plastic clips from the back of the factory radio. (Retain the clips for re-use during kit assembly.)

Continue to kit assembly.

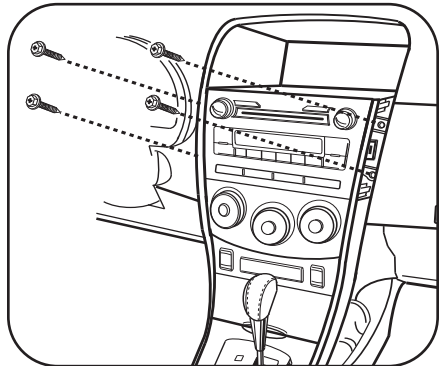
A



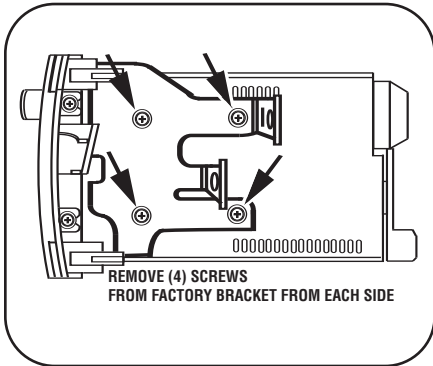
B



C



D



DOUBLE DIN/STACKED ISO MOUNT UNITS PROVISION

**Note: Refer also to the instructions included with the aftermarket radio.*

- 1 Attach the clips removed from the factory radio to the back of the radio housing trim plate. (Figure A)
- 2 Attach the factory mounting brackets and the Double DIN trim plates to the Double DIN or the stacked ISO mount unit(s) using the screws supplied with the unit(s). (Figure B)

Continue to final assembly.

